

GESTRA Steam Systems

Product Range A1

Condensate Pump UNA 25-PS DN40 PN40

Description:

The steam-powered condensate-pump UNA 25-PS collects and pumps condensate by means of motive steam in level-dependent intervals. It utilises a float operated mechanism to control motive steam and vent connection. Typical application is condensate return where the backpressure is higher than the upstream pressure of the unit or the condensate is to be lifted downstream of the unit.

Body Design:

Horizontal connection DN40.

Pump capacity against 1 bar:

Approx. 800/600 kg/h cold / hot condensate at 13 bar motive steam and 1 m positive head.

Connections:

Flanges:

- EN 1092, PN40,
- ASME Class 150 RF - 11/2"

Threaded Ends:

- G 11/2
- 11/2" NPT

Flange PN40, 11/2" NPT, G		EN-JS 1049
Max. allowable pressure	PMA [bar]	40
Max. allowable temperature	TMA [°C]	350
Max. operating pressure	PMO [bar]	13
Max. operating back press.	PMOB [bar]	5
Flange Class 150		EN-JS 1049
Max. allowable pressure	PMA [bar]	19.6
Max. allowable temperature	TMA [°C]	350
Max. operating pressure	PMO [bar]	13
Max. operating back press.	PMOB [bar]	5

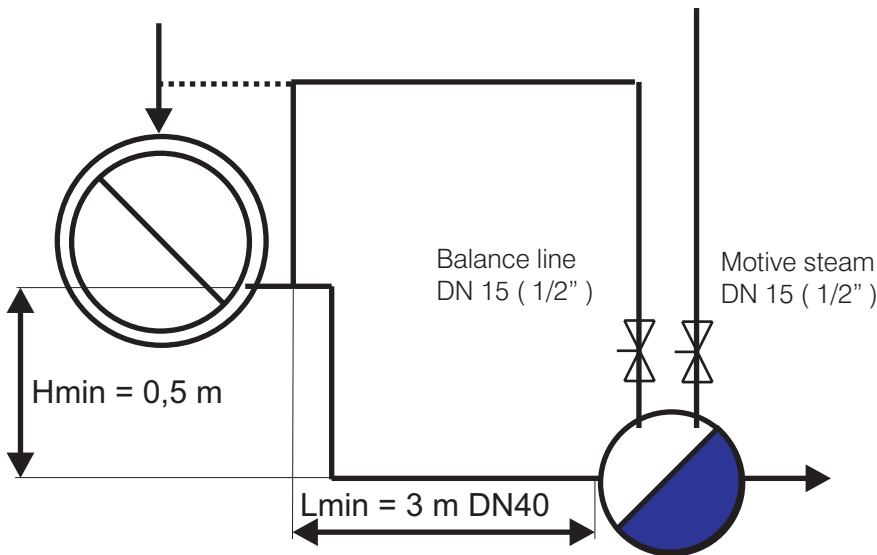
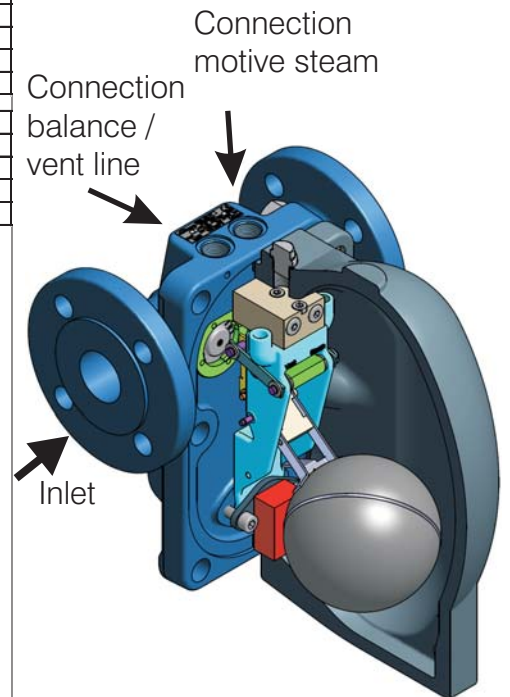


Fig.1: Connection UNA 25-PK to heat exchanger

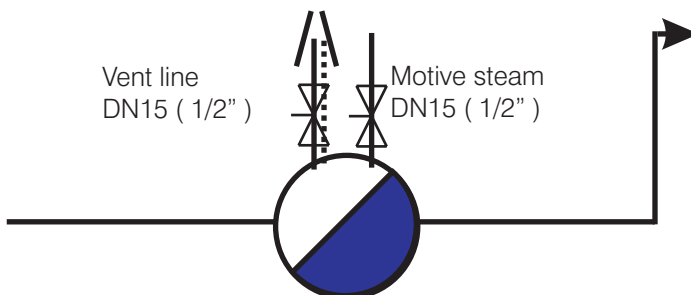


Fig.2: Connection UNA 25-PS to condensate line, venting to atmosphere, condensate lifted to elevated condensate line.
(pressureless condensate drainage, condensate is strongly subcooled)

**Pump-Steam Trap
UNA 25-PS
DN40 PN40**

When ordering please indicate

Body material, material of screws/bolts, steam pressure & temperature, back pressure, condensate flowrate, trap model, end connection, size, orifice number, details of application or type of steam user. The following test certificates can be issued on request, at extra cost:
In accordance with EN 10204-2.1, -2.2, -3.1 and 3.2. All inspection requirements have to be stated with the order. After supply of the equipment certification cannot be established. For other test certificates, tests and inspection charges please consult us.

PED (Pressure Equipment Directive)

The equipment fulfills the requirements of the Pressure Equipment Directive PED 97/23/EC.

UNA 25-PK for applications with fluids of group 2. With CE marking (apart from equipment according to section 3.3).

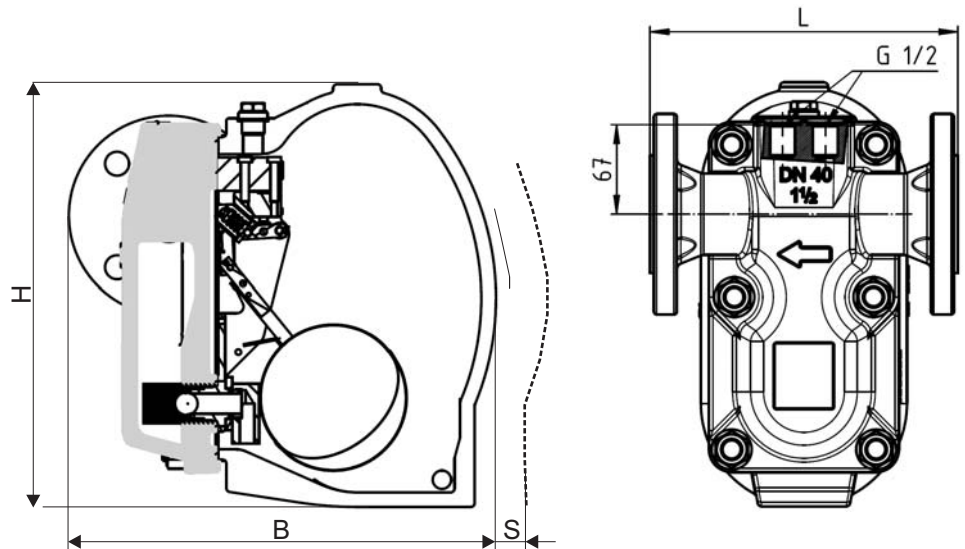
ATEX (Atmosphère Explosible)

The equipment does not have its own potential source of ignition and is therefore not subject to the ATEX Directive 94/9/EC. The equipment can be used in potentially explosive areas 0, 1, 2, 20, 21, 22 (1999/92/EC). The equipment is not Ex marked.

Supply in accordance with our general terms of business.

Attention,
Additional connection required
- Motive steam line (1/2" female connection on UNA body), max. 13 bar, this line shall be drained to ensure dry steam supply.
- Balance / vent line (1/2" female connection on UNA body).
- Positive head between heat exchanger and UNA,
- Connecting line between drain point and UNA inlet shall have a minimum length to ensure enough buffer volume.

Safety Note:
For assembly / disassembly the UNA must be cold and motive steam supply must be depressurized!
Danger of severe scalds when disassembling the regulator or operating the regulator by escaping hot medium. Closing of shut-off valves in balance/vent and motive steam line will not be sufficient to depressurize the unit.



Dimensions	
H	318
B	325
S	200
L (flange PN40)	230
L (flange CL 150, threaded ends)	226

Materials	EN	ASTM
	Body	EN-JS 1049
Cover	EN-JS 1049	-
Internals	Nichtrostender Stahl	Stainless Steel

GESTRA AG

Postfach 10 54 60, D-28054 Bremen
Münchener Str. 77, D-28215 Bremen
Telefon +49 (0) 421 35 03 - 0, Telefax +49 (0) 421 35 03-393
E-Mail gestra.ag@flowserve.com, Internet www.gestra.de

